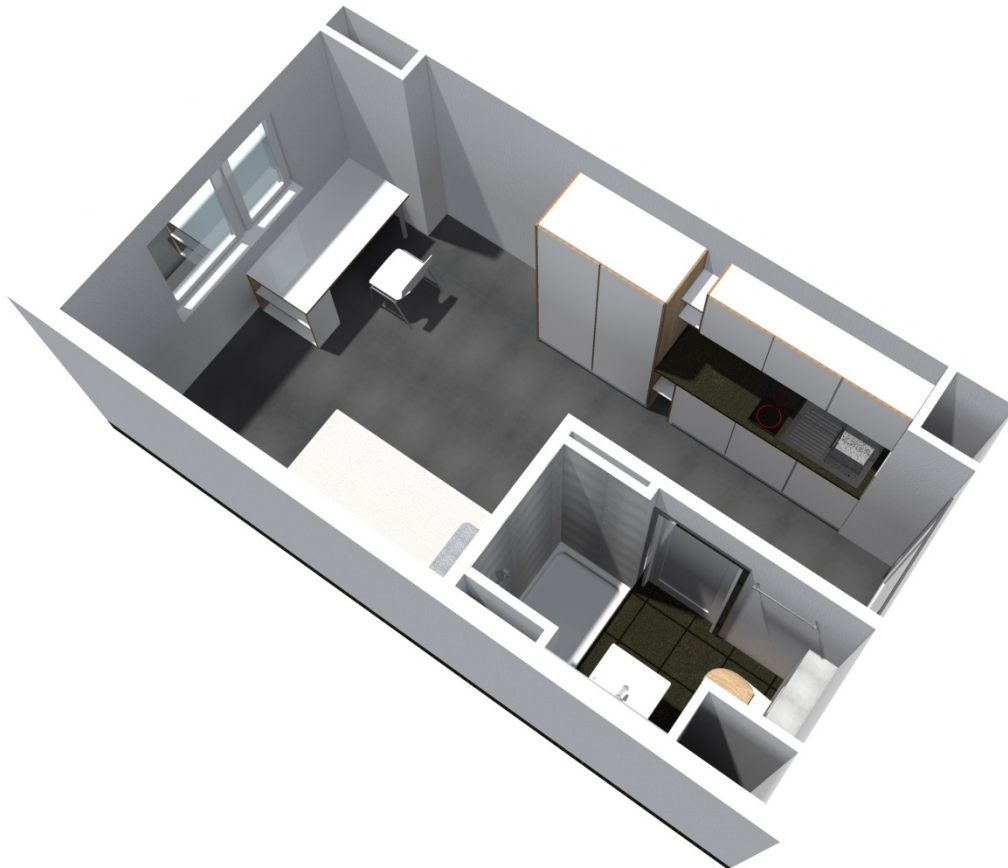


In our **dormitory St. Peter, Walter-Meckauer-Straße 12-28, Sophienstraße 12-16, 90478 Nürnberg** we offer following living facilities:

Single apartments at the price of **213,00 to 286,00 Euro** and shared apartments at the price of **158,00 to 282,00 Euro**

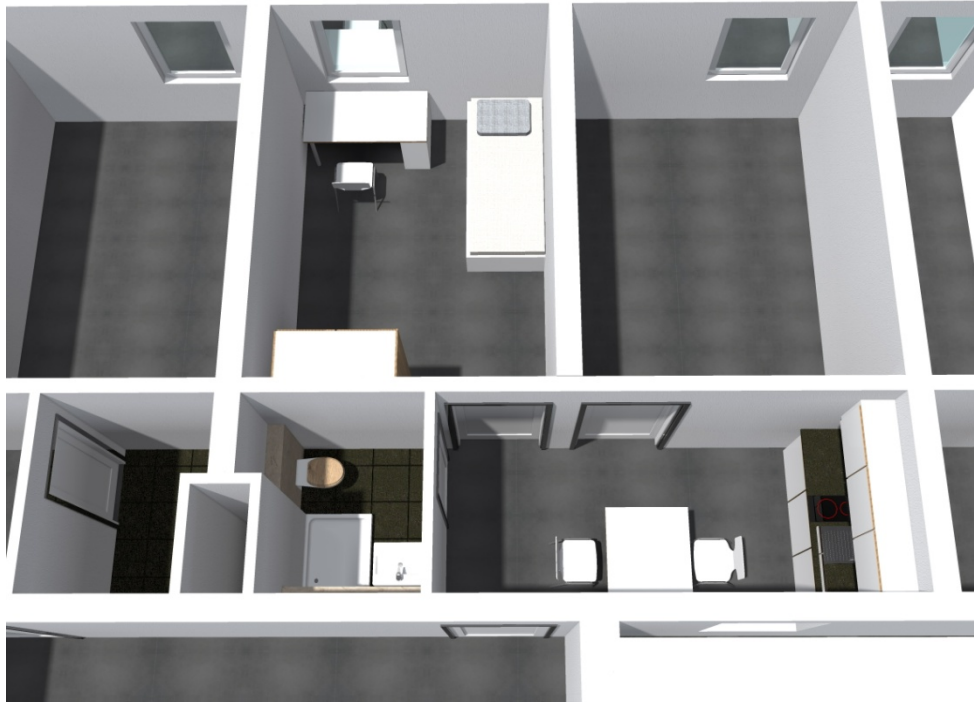
Single apartment:

A single apartment is always equipped with own bathroom (shower, basin and toilet), also a kitchenette. The kitchenette contains a sink, two cooking plates and a refrigerator. Every apartment is furnished (bed with mattress, desk, chair and wardrobe).



Shared apartment:

Shared apartments are available in different sizes, starting from two persons. Within a shared apartment the tenants use the sanitary facilities and kitchen together. Each has its own separate lockable room. The rooms are furnished (bed with mattress, desk, chair and wardrobe).



Studentenwohnanlage St. Peter, Walter-Meckauer-Str. 12-28 und Sophienstr. 12-16, 90478 Nürnberg

| | Type of room | Number of units | average living area sqm | Basic rent euros | Prepayment of add. Costs euros | Total rent euros | Security euros |
|--------------------|--------------|-----------------|-------------------------|------------------|--------------------------------|------------------|----------------|
| Single apartment * | E0 | 4 | 14,1 | 138,00 | 75,00 | 213,00 | 414,00 |
| Single apartment * | E1 | 8 | 15,7 | 144,00 | 77,00 | 221,00 | 432,00 |
| Single apartment * | E2 | 244 | 16,4 | 155,00 | 77,00 | 232,00 | 465,00 |
| Single apartment * | E3 | 24 | 17,5 | 160,00 | 79,00 | 239,00 | 480,00 |
| Single apartment * | E4 | 56 | 19,0 | 170,00 | 80,00 | 250,00 | 510,00 |
| Single apartment * | E5 | 19 | 20,0 | 175,00 | 81,00 | 256,00 | 525,00 |
| Single apartment * | E6 | 4 | 21,2 | 186,00 | 83,00 | 269,00 | 558,00 |
| Single apartment * | E7 | 2 | 22,7 | 191,00 | 84,00 | 275,00 | 573,00 |
| Single apartment * | E8 | 5 | 24,1 | 200,00 | 86,00 | 286,00 | 600,00 |

| | | | | | | | |
|-------------------------------------|-----|----|------|--------|--------|---------------|---------------|
| 2Pers. sharing a double apartment * | M4 | 1 | 13,5 | 84,00 | 74,00 | 158,00 | 252,00 |
| 2Pers. sharing a double apartment * | M3 | 1 | 12,4 | 93,00 | 73,00 | 166,00 | 279,00 |
| 2Pers. sharing a double apartment * | M1 | 40 | 16,1 | 96,00 | 77,00 | 173,00 | 288,00 |
| 2Pers. sharing a double apartment * | M2 | 28 | 16,5 | 99,00 | 78,00 | 177,00 | 297,00 |
| 2Pers. sharing a double apartment * | M9 | 1 | 21,1 | 96,00 | 82,00 | 178,00 | 288,00 |
| 2Pers. sharing a double apartment * | M6 | 5 | 20,8 | 113,00 | 82,00 | 195,00 | 339,00 |
| 2Pers. sharing a double apartment * | M5 | 1 | 23,9 | 144,00 | 85,00 | 229,00 | 432,00 |
| 2Pers. sharing a double apartment * | M7 | 7 | 26,4 | 142,00 | 94,00 | 236,00 | 426,00 |
| 2Pers. sharing a double apartment * | M10 | 1 | 26,6 | 165,00 | 88,00 | 253,00 | 495,00 |
| 2Pers. sharing a double apartment * | M8 | 1 | 39,1 | 179,00 | 103,00 | 282,00 | 537,00 |
| Double apartment * couple | D3 | 1 | 32,9 | 237,00 | 155,00 | 392,00 | 711,00 |
| Group apartment (flat share) * | G1 | 9 | 14,2 | 107,00 | 75,00 | 182,00 | 321,00 |
| Group apartment (flat share) * | G2 | 30 | 15,7 | 111,00 | 77,00 | 188,00 | 333,00 |
| Group apartment (flat share) * | G3 | 63 | 16,6 | 110,00 | 78,00 | 188,00 | 330,00 |
| Group apartment (flat share) * | G4 | 58 | 17,5 | 120,00 | 78,00 | 198,00 | 360,00 |
| Group apartment (flat share) * | G5 | 28 | 19,0 | 130,00 | 80,00 | 210,00 | 390,00 |
| Group apartment (flat share) * | G6 | 6 | 20,1 | 137,00 | 81,00 | 218,00 | 411,00 |
| Group apartment (flat share) * | G7 | 2 | 27,0 | 145,00 | 89,00 | 234,00 | 435,00 |

Car parking spaces:

Motorbike parking spaces:

Rent for parking spaces: 18,00 € to 30,00 €

Rent for parking spaces: 6,00 €

All amounts in euro;

**) plus electricity tariff; graphics are just examples; area information represents an average.*