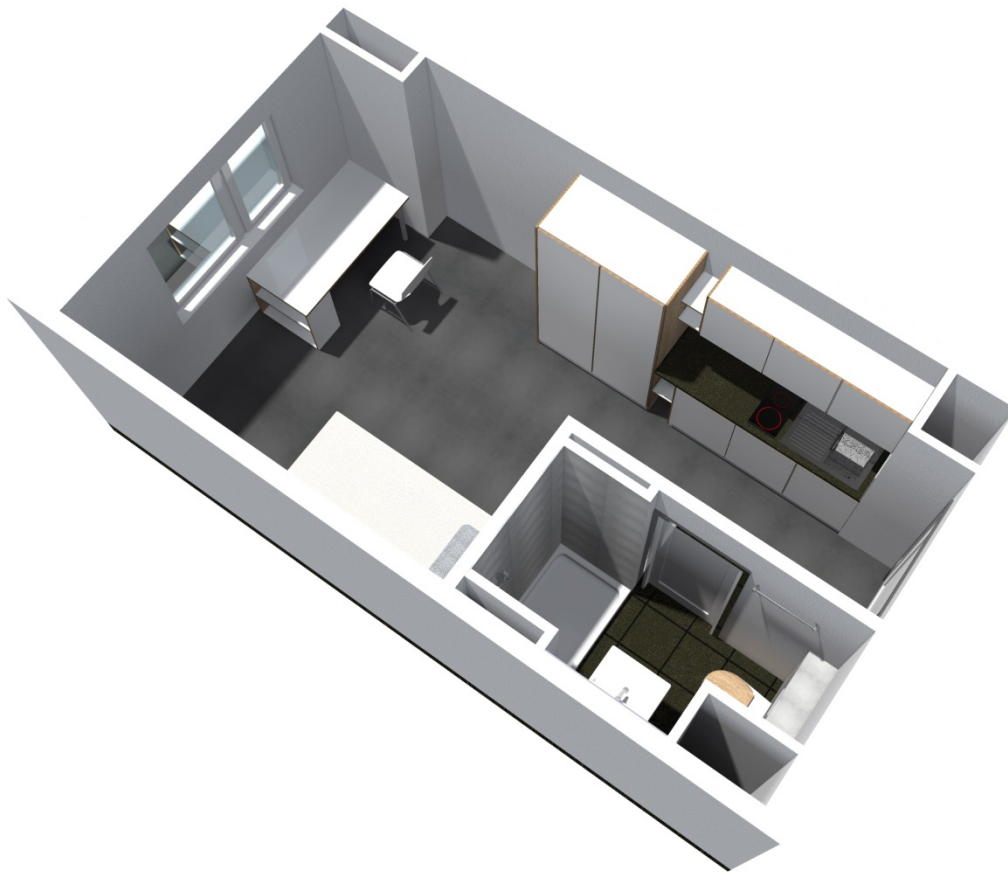


In our **dormitory Hofmannstraße 25 & 29, 91052 Erlangen** we offer following living facilities:

Single apartments at the price of **244,00 to 253,00 Euro**,
Comfort room at the price of **232,00 Euro** and
shared apartments at the price of **427,00 to 443,00 Euro**

Single apartment:

A single apartment is always equipped with own bathroom (shower, basin and toilet), also a kitchenette. The kitchenette contains a sink, two cooking plates and a refrigerator. Every apartment is furnished (bed with mattress, desk, chair and wardrobe).



Comfort room:

A comfort room is defined as a flat share, where each room (which can be locked separately) is equipped with own bathroom (shower, basin and toilet). Kitchens are shared with other tenants on each floor. The rooms are furnished (bed with mattress, desk, chair and wardrobe).



Shared apartment:

Shared apartments are available in different sizes, starting from two persons. Within a shared apartment the tenants use the sanitary facilities and kitchen together. Each has its own separate lockable room. The rooms are furnished (bed with mattress, desk, chair and wardrobe).



Hofmannstraße 25+29, 91052 Erlangen

Rental fees, prepayment of additional costs and securities as of 1. January 2023	Type of room	Number of units	**)average living area sqm	Basic rent euros	Prepayment of add. Costs euros	Total rent euros	Security euros
Single apartment *	E1	17	16,0	140,00	104,00	244,00	420,00
Single apartment *	E2	75	16,8	145,00	104,00	249,00	435,00
Single apartment *	E3	20	17,1	147,00	106,00	253,00	441,00
Comfort room*	DGK	10	17,9	124,50	107,50	232,00	373,00
2 Pers. sharing a double apartment *	D1	2	29,2	225,00	202,00	427,00	675,00
2 Pers. sharing a double apartment *	D2	2	32,4	236,00	207,00	443,00	708,00

Car parking spaces in a car park:

Rent for parking space: 26,00 €

All amounts in euro;

*) plus electricity tariff; graphics are just examples; area information represents an average.

****) Note:** Please note that stated room sizes are only average values. When determining the room category, the square meters of all communal areas (e.g communal rooms, kitchens, showers, toilets, washrooms, etc.) are proportionally allocated to all residents, furthermore the location and special features are taken into account.

Please refer to your rental offer for the final classification of your unit in the corresponding room category. If you have any questions, please do not hesitate to contact the WohnService in Erlangen or Nuremberg.